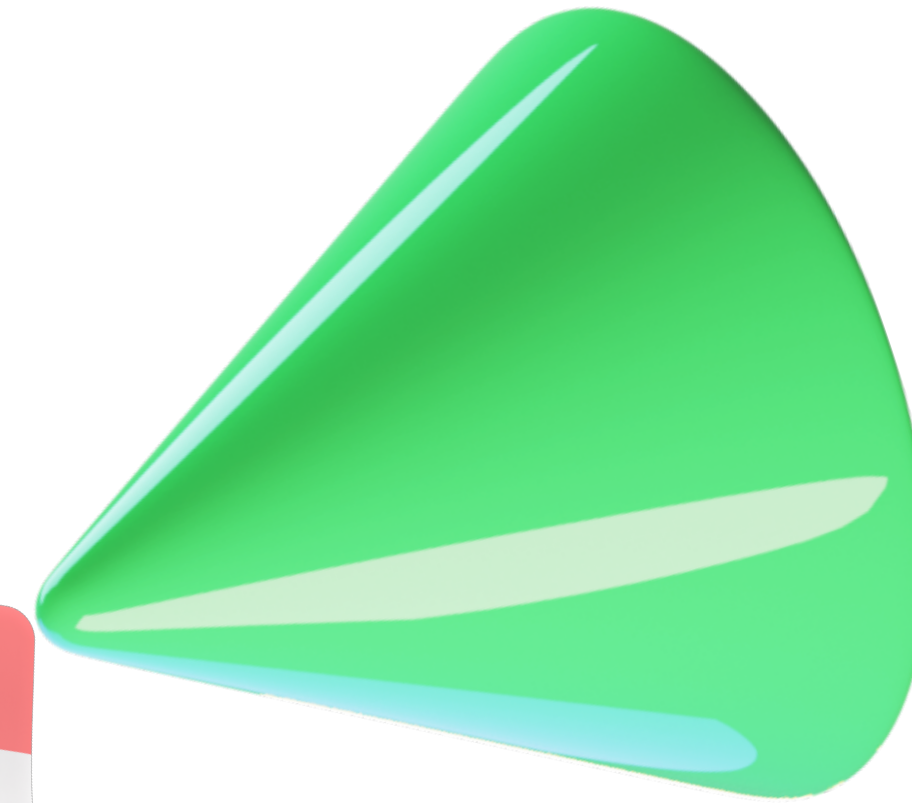


CASE20



Контроль производительности
сотрудников





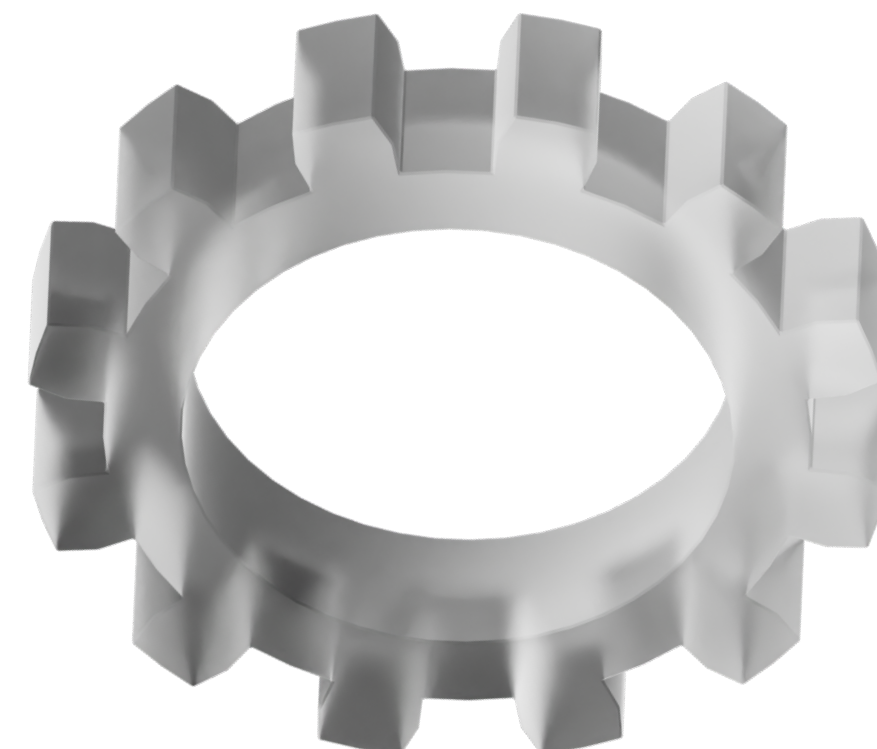
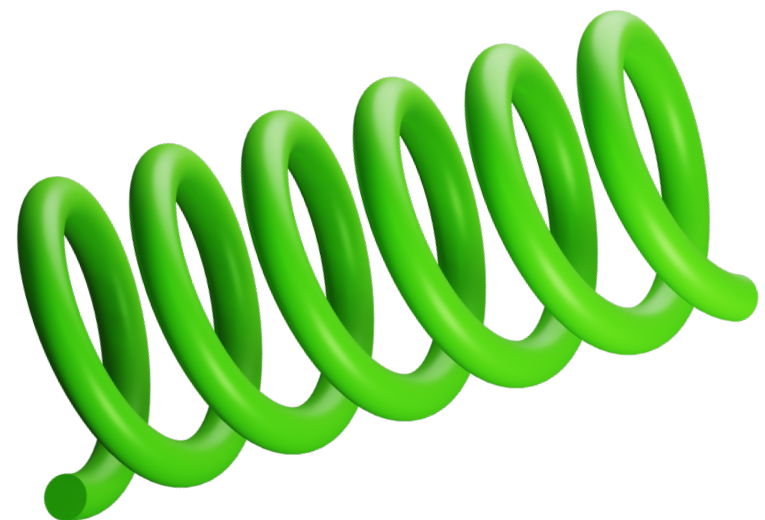
Даниил Смирнов
Backend-разработчик



Сергеев Георгий
Project-менеджер



Цой Юрий
Frontend-разработчик





Проблема



Как систематизировать мониторинг и оценку эффективности работы сотрудников?





Решение

Веб-сервис, предназначенный для аналитики эффективности работы каждого сотрудника



Страница авторизации

Авторизация

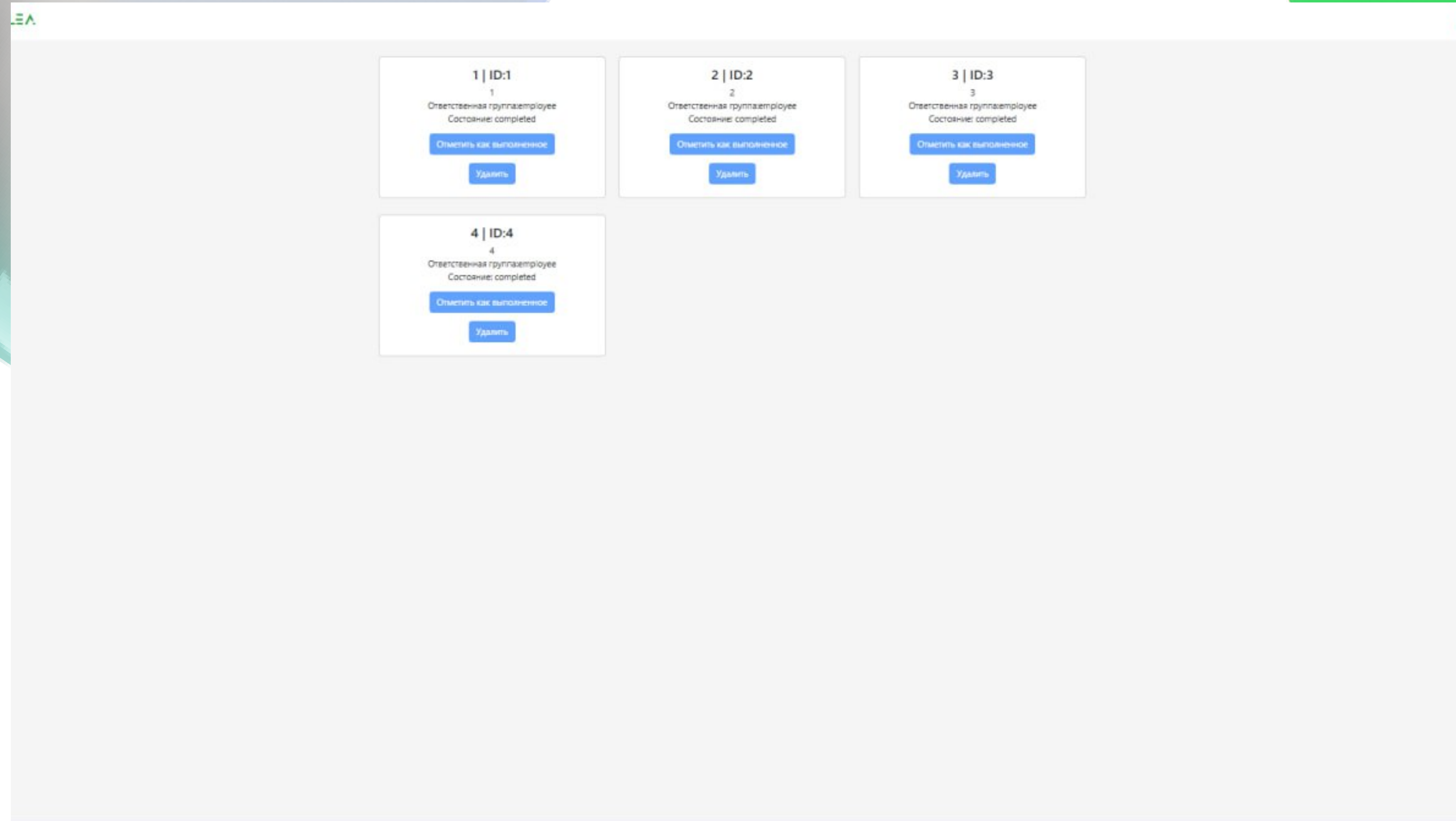
Login or Email

Password

Авторизоваться



Админ-панель





Страница аналитики

The screenshot shows a web application interface with a blue header and a white main content area. At the top right of the header, the text "RELEASE CONTROL" is visible. The main content area contains a user profile section at the top with a user icon and the email "root@root.com". Below this are three panels: "Create New Staff" with fields for Email, Login, Password, Telegramm, and Role (set to Employee); "Create Task" with fields for Task_header, Task_body, and a dropdown menu set to Employee; and "User Manager" with a user ID "ID:1" and a "Удалить" button. At the bottom, there is a line graph titled "Analytics for year" showing a single peak at month 10 with a value of approximately 4.0. The x-axis is labeled "months" and ranges from 1 to 12. The y-axis is labeled "value" and ranges from 0 to 4.0.